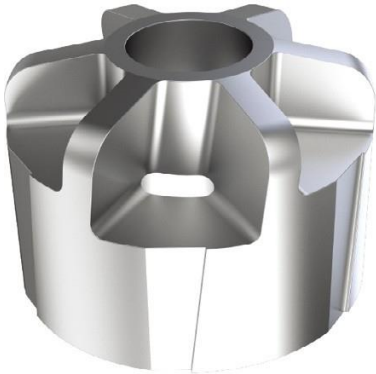


SEDNA Magnetic Impeller SDP Series



<< FEATURES

-SDP trộn và hòa tan bột rắn bằng cách sử dụng RPM tốc độ cao và lưỡi mạnh.

Phạm vi ứng dụng

-SDP mixes and dissolves solid powder using high speed RPM and powerful blades

Applications Syrup, Eye drop, Suspension

<< PRODUCT INFORMATION

Model	Mixing volume Design RPM	Specification
SDP-60	100L (AC 0.37kw) 1500RPM	<ul style="list-style-type: none"> ▶ Impeller Material : Stainless Steel(316L) – Surface Finish : Ra < 0.4μm – Bearing material : TC/SiC(Tungsten carbide) ▶ Welding Plate – Material : Stainless Steel(316L) ▶ Bearing Material : Stainless Steel(316L) – Bearing material : TC/SiC(Tungsten carbide) – O-ring : EPDM or PTFE capsule
SDP-100	300L (AC 0.75kw) 1500RPM	<ul style="list-style-type: none"> ▶ Drive Unit (Motor) – AC 4P : 220/380, 480 VAC – Protection : IP55 – 50Hz / 60Hz
SDP-150	800L (AC 2.2kw) 1500RPM	
SDP-200	3000L (AC 3.7kw) 1500RPM	

-Note: Chọn nước làm tiêu chuẩn cho độ nhớt của dung dịch.

-Note: Mixing volume is based on water viscosity. Please contact us to consult further